

INDUSTRIAL RANGE

COMPONENTS

DEG/P

TERMOPHYSICAL AIR SEPARATOR



Main features

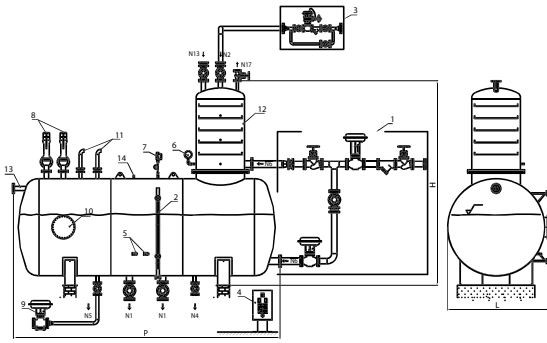
Apparatus for supply water thermophysical degassing of steam generator.

Some of the product's main features are related below:

- C stainless steel (stainless steel AISI 304 version also available), horizontal cylindrical accumulation tank with dished ends, with internal steam injection diffuser for temperature maintenance;
- vertical degassing turret, manufactured from C steel (stainless steel AISI 304 version also available) flanged to the lower reservoir with stainless steel AISI 304 jagged internal plates
- Insulating coating with high density mineral wool and aluminum sheet finish.
- Steel sheet support saddles and sectioned support base designed to ensure unit support.

Accessories:

- steam regulating unit for temperature maintenance (105 °C) in the storage tank composed of:
 - self-driven pneumatic steam regulating valve
 - interception and bypass valve
 - steam filter
 - appropriate steam injectors
 - temperature probe
- steam regulating unit for pressure maintenance (0,2-0,4 bar) in the degassing turret composed of:
 - self-driven pneumatic steam regulating valve
 - interception and bypass valve
 - steam filter
 - appropriate steam injectors
 - pressure transmitter
- water adjustment unit for reservoir tank level control, composed of:
 - supply water electric valve
 - interception and bypass valve
 - water filter
 - probe level regulator
 - level indicator
 - thermometer
 - drain valve
 - safety valve
 - vacuum breaker valve
 - IP55 general electric panel



Characteristics	Code	Design pressure	Design temperature	Total volume H ₂ O	Deaeration capacity	Steam consumption	Weight total
Model		bar	°C	lt	l/h	kg/h	kg
DEG 8000/P	85500038	0,5	110	8000	12000	2160	2500
DEG 15000/P	85500039	0,5	110	15000	22500	4050	3800
DEG 25000/P	85500047	0,5	110	25000	37500	6750	5250
DEG 30000/P	85500045	0,5	110	30000	45000	8100	6550
DEG 40000/P	85500048	0,5	110	40000	60000	10800	8000
DEG 50000/P	85500034	0,5	110	50000	75000	13500	9900
DEG 8000/P AISI304	85500052	0,5	110	8000	12000	2160	2500
DEG 15000/P AISI304	85500054	0,5	110	15000	22500	4050	3800
DEG 25000/P AISI304	85500056	0,5	110	25000	37500	6750	5250
DEG 30000/P AISI304	85500057	0,5	110	30000	45000	8100	6550
DEG 40000/P AISI304	85500058	0,5	110	40000	60000	10800	8000
DEG 50000/P AISI304	85500059	0,5	110	50000	75000	13500	9900

Dimensions	D tank	H tank	D tower	H tower	H TOTAL	L	P	N1	N2	N4	N5	N6	N13	N11
Model	mm	mm	mm	mm	mm	mm	mm	DN/in	DN/in	DN/in	DN/in	DN/in	DN/in	DN/in
DEG 8000/P	1600	1950	800	1850	3800	1700	4900	80	50	50	50	100	80	50
DEG 15000/P	2000	2350	1000	1900	4250	2100	5400	100	80	50	50	125/100	80	40
DEG 25000/P	2200	2550	1400	2650	5200	2300	7150	100	80	50	100	125	125	65
DEG 30000/P	2400	2750	1600	2800	5550	2500	7250	100	80	50	100	125	125	65
DEG 40000/P	2450	2800	1800	3100	5900	2550	9300	125	100	50	100	150	125	65
DEG 50000/P	2450	2800	2000	3200	6000	2550	11400	125	100	50	100	250	150	65
DEG 8000/P AISI304	1600	1950	800	1850	3800	1700	4900	125	100	50	100	250	150	65
DEG 15000/P AISI304	2000	2350	1000	1900	4250	2100	5400	125	100	50	100	250	150	65
DEG 25000/P AISI304	2200	2550	1400	2650	5200	2300	7150	125	100	50	100	250	150	65
DEG 30000/P AISI304	2400	2750	1600	2800	5550	2500	7250	125	100	50	100	250	150	65
DEG 40000/P AISI304	2450	2800	1800	3100	5900	2550	9300	125	100	50	100	250	150	65
DEG 50000/P AISI304	2450	2800	2000	3200	6000	2550	11400	125	100	50	100	250	150	65

About 1 hour of accumulation - water temperature 5-90 °C, steam pressure 12 bar