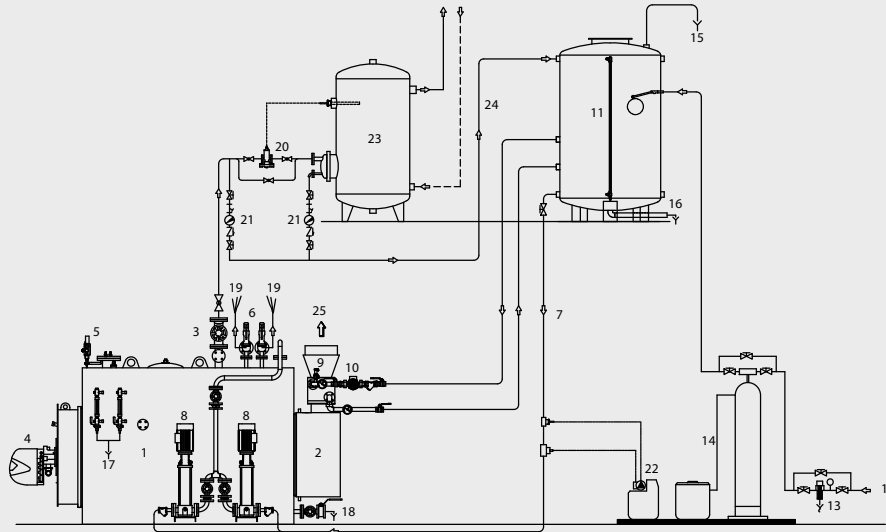


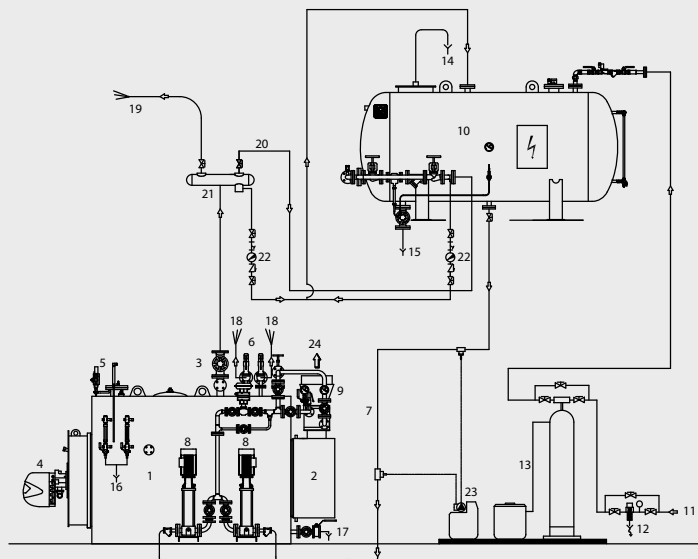
System layouts for **SIXEN, GX, GXC e BX** generators with condensate partial recovery and assembly A economiser



**Description:**

- |                      |                                |  |
|----------------------|--------------------------------|--|
| 1. Steam generator   | 10. Eco circulation pump       | 19. Safety valve drain                 |
| 2. Smoke box         | 11. Condensate collection tank | 20. Balancing valve                    |
| 3. Steam flow        | 12. Water supply               | 21. Condensate discharge               |
| 4. Burner            | 13. Filter                     | 22. Dosing pump                        |
| 5. Pressure gages    | 14. Water softening system     | 23. Use: industrial d.h.w water heater |
| 6. Safety valves     | 15. Aerator                    | 24. Condensate return                  |
| 7. Pump power supply | 16. Condensate tank drain      | 25. Fumes                              |
| 8. Supply pumps      | 17. Level indicator drain      |  |
| 9. Economiser        | 18. Boiler drain               |  |

System layouts for **SIXEN, GX e GXC** generators with condensate partial recovery and assembly B economizer



**Description:**

- |                      |                            |                                   |
|----------------------|----------------------------|-----------------------------------|
| 1. Steam generator   | 9. Economizer              | 17. Boiler drain                  |
| 2. Smoke box         | 10. Aerator                | 18. Safety valve drain            |
| 3. Steam intake      | 11. Water supply           | 19. Direct use with steam to lose |
| 4. Burner            | 12. Filter                 | 20. Deaerator steam supply        |
| 5. Pressure gages    | 13. Water softening system | 21. Steam collectro               |
| 6. Safety valves     | 14. Aerator                | 22. Condensate discharge          |
| 7. Pump power supply | 15. Tank drain             | 23. Dosing pump                   |
| 8. Supply pumps      | 16. Level indicator drain  | 24. Fumes                         |