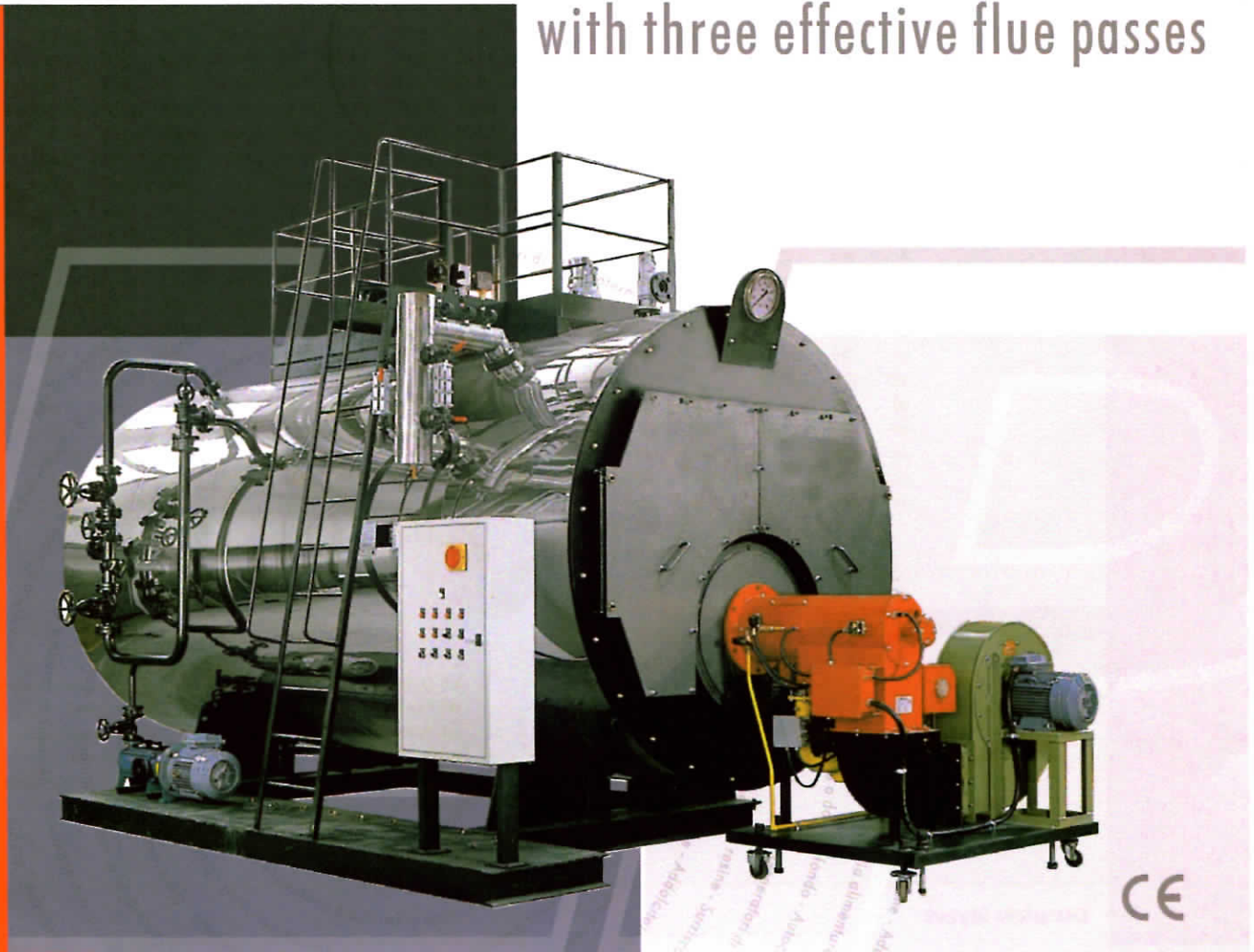


Vapoprex 3G (medium pressure from 12 to 25 bar) with three effective flue passes

www.lpvcaldaie.com



Single-structure saturated steam generator with pressurised furnace and 3 effective flue passes, beaded tube plates to avoid corner welding, completely cooled reversing chamber, furnace with hot-formed expansion joints without welding on the tops, so as to easily absorb the expansion of the furnace, expanded and welded fire tubes, turbulators in the 2nd flue pass (AISI 430 stainless steel) that assist heat exchange (boilers with expanded tubes manufactured upon request). The volume of the combustion chamber is suitably sized to achieve thermal loads lower than 1 MW/m^3 and low NO_x emissions.

The very high active exchange surface allows the average thermal flow to be limited to around 35 kW/m^2 , guaranteeing high efficiency (minimum 90%). Its constructional characteristics mean a high water capacity and a significant evaporating surface, and as a consequence a high thermal inertia and extremely high steam titre. The boiler is supplied as a single structure for completely automatic operation, and is fitted as standard with stairways and walkways, and AISI 430 steel casing. Design, approval and checks performed in accordance with the Italian ISPEL standards in force. Upon request, all

these generators may be fitted with flanged stubs, to allow the installation of probes and valves, as per the TRD 604 standards. The VAPOPRES 3G generators come in models ranging from 1,250,000 to 12,000,000 kcal/h. Upon request, they may be fitted with a combustion air preheater that increases efficiency by three percent.

Vapoprex 3G (medium pressure from 12 to 25 bar) with three effective flue passes

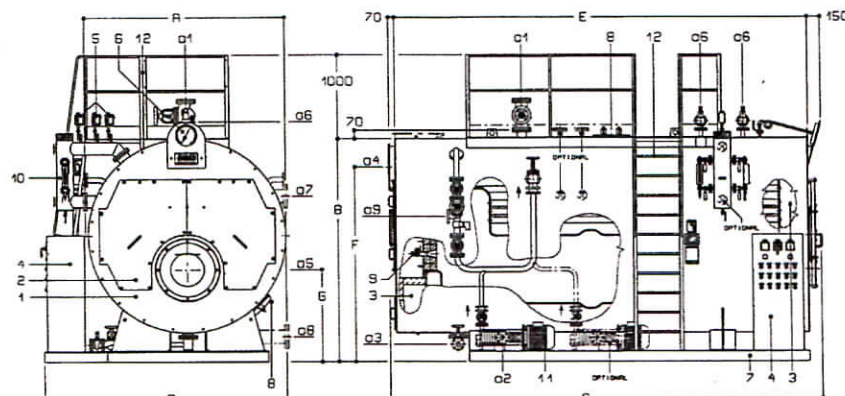


TYPE		1250	1500	1750	2000	2500	3000	3500	4000	4500	5000	6000	7200	9000	10400	12000		
Output	kW	1454	1744	2035	2326	2907	3489	4070	4652	5234	5815	6978	8374	10467	12095	13956		
Input	kW	1615	1937	2261	2584	3230	3876	4522	5168	5815	6461	7753	9304	11630	13438	15506		
Steam production (12 bar)	t/h	2,15	2,58	2,99	3,45	4,31	5,17	6,03	6,89	7,76	8,62	10,34	12,41	15,52	18	20		
Total content	m ³	6,2	7,42	8,74	8,90	10,84	11,60	13,30	14,7	16,8	17,4	20,9	21,0	23,6	32,83	36,9		
Level content	m ³	5,1	6,11	7,22	7,20	8,80	9,40	10,9	11,9	14,1	14,1	17	17,4	19	25,28	28,4		
Dry weight (12 bar)	kg	8150	9000	9700	10680	12100	14000	15400	18000	20100	24000	25800	33400	38000	49000	54200		
Dry weight (15 bar)	kg	9250	10250	11000	12000	13800	15900	17500	20500	22900	26800	29500	37900	43500	55000	61000		
Dimensions	A	mm	2230	2280	2230	2420	2420	2600	2600	2720	2720	2940	2940	3000	3000	3140	3140	
	B	mm	2500	2500	2500	2720	2720	2960	2960	3120	3120	3360	3360	3480	3480	3620	3620	
	C	mm	3810	4320	4870	4420	5120	4960	5560	5660	6260	5760	6660	6820	8220	8020	8820	
	D	mm	2740	2740	2740	2940	2940	3120	3120	3260	3260	3480	3480	3540	3540	3680	3680	
	E	mm	3590	4100	4650	4200	4900	4740	5340	5440	6040	5540	6440	6600	8000	7800	8600	
	F	mm	2150	2150	2150	2350	2350	2550	2550	2700	2700	2950	2950	3060	3060	3200	3200	
	G	mm	1060	1060	1060	1110	1110	1230	1230	1300	1300	1370	1370	1430	1430	1480	1480	
	Generator body	Ø	mm	2200	2200	2200	2400	2400	2580	2580	2720	2720	2940	2940	3000	3000	3140	3140
	a1	DN	65	65	80	100	100	125	125	150	150	150	150	200	200	200	250	
a2	DN	40	40	40	40	40	40	40	40	40	40	65	65	65	65	65		
a3	DN	32	32	32	40	40	50	50	65	65	65	65	65	65	2 x 50	2 x 50		
a4	Ø	450	450	450	500	500	600	600	600	600	700	700	850	850	950	950		
a6	DN	40	40	40	40	40	65	65	65	65	65	65	80	80/100	100	100		
a7/a8	DN	100	100	100	125	150	150	150	200	200	200	200	250	250	300	300		
a9	DN	40	40	40	50	50	50	50	65	65	65	80	80	2 x 65	2 x 65	2 x 80		

Key

- | | | | |
|------------------------------|--|--|---|
| 1 Boiler body | 7 Boiler bed | a1 Steam outlet | a7 Superheated water supply (optional) |
| 2 Front inged door | 8 Manhole | a2 Feeding water pump connection | a8 Superheated water outlet (optional) |
| 3 Smoke boxes | 9 Furnace peep hole | a3 Boiler drain | a9 Auxiliary feed water connection |
| 4 Control panel | 10 Gauge and level control unit | a4 Stack connection | |
| 5 Pressure switches | 11 Feeding pump | a5 Burner Connection | |
| 6 Dial pressure gauge | 12 Stair and platform | a6 Exhaust connection of safety valve | |

Complete layout



The measurements indicated are subject to modification without notice

LPV
C A L D A I E

LPV CALDAIE S.r.l.

Via Cremonese, 150/a - 43010 Località Fontana - Parma (Italy)
Tel. +39 0521 674088 - Fax +39 0521 674082

www.lpvcaldaie.com info@lpvcaldaie.com