



SUPERHEATED WATER HEATERS

INDEX

- GMT/AS page 60
- GPT/AS page 62



SUPERHEATED WATER HEATERS

We design and produce direct fired heaters for superheated water with capacity from 150 to 20,000 kW.

Various options are available such as one or more circulation pumps connected to the heater, burners for various fuels, economizers, combustion air preheaters, horizontal and vertical configurations. All heaters are designed, tested, built on the basis of the latest standards and can be certified according to PED, ASME, naval or other regulations depending on the country of installation.



SUPERHEATED
WATER HEATERS
**GMT/AS
MODEL**

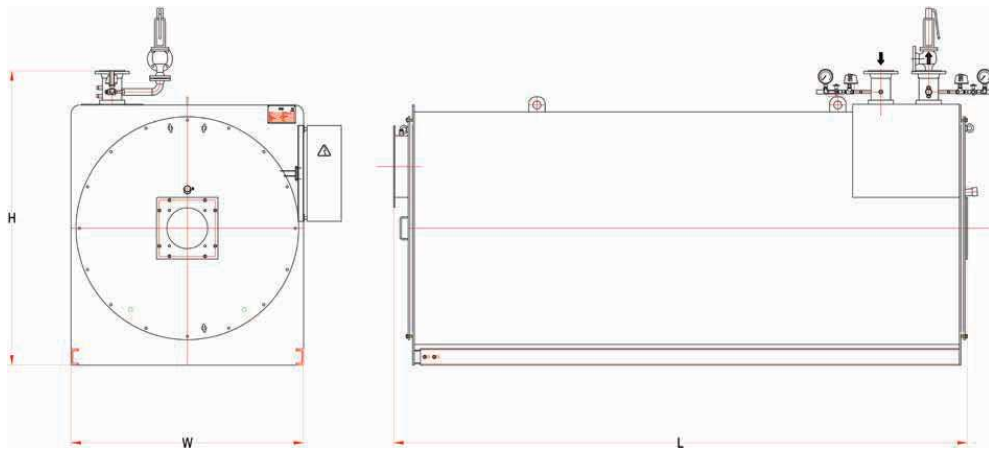
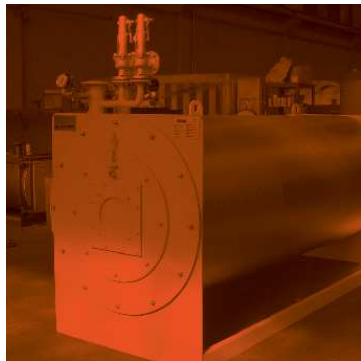
Water heaters in horizontal and vertical versions for temperatures up to 180°C and pressure up to 10 barg. Upon request versions for higher temperature and pressure may be realized.

The **GMT/AS** and **GMT/AS/V** heaters have been specially designed for maximum efficiency. On these boilers, you can install any type of market-based burner, thus facilitating assistance in every area at the lowest cost.

They are characterized by:

- Small dimensions
- Quick startup
- Maximum operational safety
- Minimum quantity of refractory material
- Tubular bundle with one or more coiled spiral, balanced and well dimensioned in order to prevent cracking phenomena
- Large volume combustion chamber
- Limited water content

Made in both horizontal and vertical versions, to better accommodate customer space requirements.



PRODUCT	
• Heater for superheated water, coil type	
TYPOLOGY	
• Coil • 3 passes • Horizontal or vertical • For superheated water	
CAPACITY	
• 150,000 kcal/h – 7,000,000 kcal/h	

TECHNICAL DATA SUPERHEATED WATER HEATERS					GMT/AS				
TYPE		GMT/AS 150	GMT/AS 250	GMT/AS 350	GMT/AS 450	GMT/AS 550	GMT/AS 800	GMT/AS 1000	GMT/AS 1250
Capacity	kcal/h	150,000	250,000	350,000	450,000	550,000	800,000	1,000,000	1,250,000
	kW	174	291	407	523	640	930	1,163	1,454
	Btu/h	595,223	992,039	1,388,855	1,785,670	2,182,486	3,174,525	3,968,156	4,960,195
	HP	234	390	546	702	858	1,248	1,560	1,949
Water inlet temperature	°C	120	120	120	120	120	120	120	120
Water outlet temperature	°C	150	150	150	150	150	150	150	150
Efficiency (oil 120-150°C)	% ±1	89.0	89.0	89.0	89.0	89.0	89.0	89.0	89.0
Water content	liters	65	92	98	114	147	254	254	453
Water pressure drop 120-150°C	mm H2O	30	35	40	45	60	80	80	85
Installation length (burner excluded)	mm	1,700	2,400	2,400	2,400	2,400	3,350	3,350	3,750
Installation length (burner included)	mm	2,000	3,000	3,000	3,000	3,000	4,150	4,150	4,600
Installation width (cabinet included)	mm	1,300	1,400	1,400	1,400	1,400	1,650	1,650	1,700
Installation height	mm	1,600	1,600	1,600	1,600	1,600	1,750	1,750	1,850
Empty weight (burner excluded)	kg	700	1,100	1,100	1,200	1,850	1,950	1,950	2,800

TECHNICAL DATA SUPERHEATED WATER HEATERS					GMT/AS				
TYPE		GMT/AS 1500	GMT/AS 2000	GMT/AS 2500	GMT/AS 3000	GMT/AS 4000	GMT/AS 5000	GMT/AS 6000	GMT/AS 7000
Capacity	kcal/h	1,500,000	2,000,000	2,500,000	3,000,000	4,000,000	5,000,000	6,000,000	7,000,000
	kW	1,745	2,326	2,908	3,489	4,652	5,815	6,978	8,141
	Btu/h	5,952,234	7,936,312	9,920,390	11,904,468	15,872,624	19,840,780	23,808,936	27,777,092
	HP	2,339	3,119	3,899	4,679	6,238	7,798	9,357	10,917
Water inlet temperature	°C	120	120	120	120	120	120	120	120
Water outlet temperature	°C	150	150	150	150	150	150	150	150
Efficiency (oil 120-150°C)	% ±1	89.0	89.0	89.0	90.0	89.0	89.0	89.0	89.0
Water content	liters	518	767	1,314	1,520	1,989	2,833	3,127	3,350
Water pressure drop 120-150°C	mm H2O	90	90	100	100	110	120	120	150
Installation length (burner excluded)	mm	4,000	4,300	4,700	5,300	6,200	6,300	7,360	7,850
Installation length (burner included)	mm	4,800	5,400	5,650	6,400	7,500	8,150	9,250	9,800
Installation width (cabinet included)	mm	1,700	2,200	2,400	2,400	2,350	2,400	2,770	2,750
Installation height	mm	2,000	2,200	2,650	2,400	2,650	2,910	2,950	3,200
Empty weight (burner excluded)	kg	3,200	5,000	6,500	7,100	8,500	12,600	13,500	14,200