

INDUSTRIAL RANGE

HOT WATER

REX F

HOT WATER BOILER

Design pressure 6 bar

EFFICIENCY



Main features

REX F steel boiler, cylindric combustion chamber with reverse flame, completely closed round posterior side supported by a completely submerged nozzle. Connectible to pressure air jet burner for gas fuel operation. Used in systems with water temperature between 60 and 100 °C (safety thermostat set at 110 °C). Awarded 3 stars according to 92/42/EEC directive and in compliance with DL 192/05 and 311/06 requirements.

Some of the product's main features are related below:

- boiler body built from high quality steel, made from front tube sheet turned towards the combustion chamber using RSB procedures and from convex rear plate (rather than a flat surface for a better resistance internal pressure), with laser cut holes.
- cylindrical reverse flame combustion chamber, with the rear side completely sealed off by a convex bottom supported by a submerged nozzle; the flame presenting itself in the central part of the chamber, while hot gases return to the lower part of the partially submerged chamber. Hot gases will be conveyed through the tube bundle.
- EN10217-2 P235GH smoke ducts welded to tube plates
- internally finned extruded aluminum (Fin-e®), pressure-fitted to the rear part of the boiler tubes smoke as to ensure full surface contact.
- rear smoke box manufactured from thermal insulated steel sheets, constructed in one piece that can be easily opened and that allows smoke duct inspections, fastened with bolts, equipped with chimney connection and cleaning door.
- boiler casing equipped with system and working device connections, all manufactured with approved welding procedures and qualified personnel.
- round, embossed, aluminum casing
- high density fiberglass mattress insulation
- base built in carbon steel to ensure the support and movement of the whole group

Standard equipment:

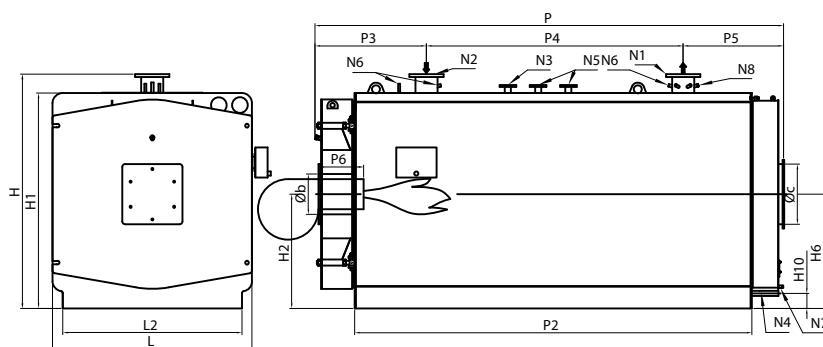
- pressure monitoring instrumentation, containing:
 - large dial 3 way test valve manometer
 - high pressure pressure gage with manual reset (only for abroad versions)
- temperature monitoring instrumentation, containing:
 - 0-120°C large scale thermometer
 - high temperature, manual reset safety thermostat (INAIL for Italian versions, industrial version for abroad)
 - 0-100° C regulating thermostat with approval INAIL (only Italy versions)
 - PT1000 thermocouple
- purging unit containing:
 - purge shut-off valve at flow start
 - male connection quick exhaust valve with manual lever
- boiler electric command panel, IP 55 electrical protection, composed of:
 - main switch
 - burner switch
 - condensate pump interrupt
 - electronic thermoregulator with delivery temperature display (on-off command and second stage burner)
 - high pressure light and alarm reset button
 - high temperature light and alarm reset button
 - alarm reset button
 - alarm siren

For each product always indicate the code at the time of the order.

INDUSTRIAL RANGE

HOT WATER

REX F



Legend:

- N1 Boiler flow
- N2 Boiler return
- N3 Equipment connections
- N4 System load/drain connection
- N5 Safety valve connection
- N6 Bulb sheath
- N7 Condensate drain
- N8 Control cover

Characteristics	Code product	Nominal Power Temp. Medium 70°C kW	Flow Thermal kW	Efficiency at 100% (ref. C.O.P.) Temp. Medium 70°C %	Efficiency at 30% (ref. C.O.P.) Temp. Medium 70°C %	Flue gas pressure drop mbar	Hydraulic pressure drop (ΔT=12°C) mbar	Water content lt	Total weight kg
Model									
REX 400 F	83819210	4000	4195	95,35	95,45	11,0	98	4450	7540
REX 450 F	83820210	4500	4720	95,34	95,50	11,0	124	4900	8040
REX 500 F	83821210	5000	5245	95,33	95,46	11,0	63	6200	9670
REX 600 F	83822210	6000	6295	95,31	95,48	12,0	91	6900	10990

Dimensions	H	H1	H2	H6	H10	L	L2	P	P2	P3	P4	P5	P6	Øb	Øc	N1	N2	N1/N2	N3	N4	N5	N6	N7	N8
	mm	mm	mm	mm	mm	mm	mm	mm	mm	mm	mm	mm	mm	mm	mm	DN/in	DN/in	PN	DN/in	DN/in	DN/in	DN/in	DN/in	DN/in
REX 400 F	2326	2140	1135	1135	150	1980	1780	4310	3596	1105	2200	1005	450-500	400	600	200	200	16	50	1"1/4	50	1/2"-3/4"	1/2"	1/2"
REX 450 F	2326	2140	1135	1135	150	1980	1780	4660	3946	1105	2550	1005	500-550	400	600	200	200	16	50	1"1/4	50	1/2"-3/4"	1/2"	1/2"
REX 500 F	2529	2340	1235	1235	150	2180	1980	4729	3948	1174	2550	1005	500-550	450	650	250	250	16	65	1"1/4	65	1/2"-3/4"	1/2"	1/2"
REX 600 F	2529	2340	1235	1235	150	2180	1980	5261	4488	1174	3100	987	530-580	450	650	250	250	16	65	1"1/4	65	1/2"-3/4"	1/2"	1/2"

Characteristics	Code product
Model	
REX 400 F EXP*	83819212
REX 450 F EXP*	83820212
REX 500 F EXP*	83821212
REX 600 F EXP*	83822212

For higher pressures see our commercial department.
Version recommended for abroad.